

LC3B Recombinant antibody

Cat:B12002R

Company: HaoKebio

Uniprot ID:Q9GZQ8

Applications: IHC:1:500-1:2000

Organism:Rabbit

IHC-Polymer:1:2000-1:8000

Species reactivity:Human Mouse Rat

IHC-TSA:1:2500-1:10000

Molecular Weight Calculation: 15 kDa

IF:1:50-1:100

Observed Molecular Weight:14-18 kDa

WB:1:1000-1:5000

Background:

LC3B, also named as MAP1LC3B, MAP1A/1BLC3, belongs to the MAP1 LC3 family. It is a sub unit of neuronal microtubule-associated MAP1A and MAP1B proteins, which are involved in microtubule assembly and important for neurogenesis. In cell biology, autophagy, or autophagocytosis, is a catabolic process involving the degradation of a cell's own components through the lysosomal machinery. It is a major mechanism by which a starving cell reallocates nutrients from unnecessary processes to more-essential processes. Two forms of LC3, called LC3-I (17-19kd) and -II(14-16 kd), were produced post-translationally in various cells. LC3-I is cytosolic, whereas LC3-II is membrane bound. The precursor molecule is cleaved by APG4B/ATG4B to form the cytosolic form, LC3-I. This is activated by APG7L/ATG7, transferred to ATG3 and conjugated to phospholipid to form the membrane-bound form, LC3-II. The amount of LC3-II is correlated with the extent of autophagosome formation. LC3-II is the first mammalian protein identified that specifically associates with autophagosome membranes. MAP1LC3 has 3 isoforms MAP1LC3A, MAP1LC3B and MAP1LC3C. MAP1LC3A and MAP1LC3C are produced by the proteolytic cleavage after the conserved C-terminal Gly residue, like their rat counterpart, MAP1LC3B does not undergo C-terminal cleavage and exists in a single modified form. This antibody is specific to LC3B.

Protein full name:

microtubule-associated protein 1 light chain 3 beta

Synonyms:

LC3, MAP1LC3B, MAP1A/1BLC3, MAP1 light chain 3-like protein 2, LC3B

Immunogen:

Recombinant protein

Isotype:

IgG

Subcellular location:

Cytoplasm

Purity:

Affinity purification

Form:

Liquid

Storage Buffer:

PBS with 0.02% sodium azide, 100 µg/ml BSA and 50% glycerol.

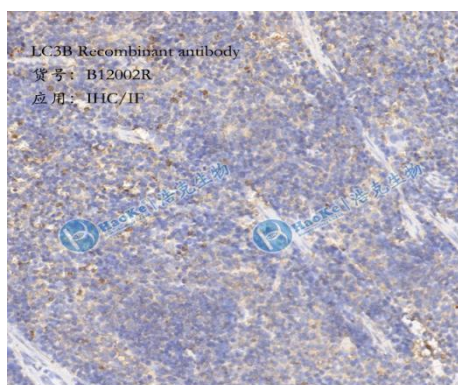
Storage:

Store at -20 °C for one year.

Experimental procedure:

Antigen retrieval: Citrate buffer (pH 6.0) , Medium high heat for 8 minutes, stop for 7 minutes, medium high heat for 8 minutes. Incubate antibody, 4°C overnight. Secondary antibody: Poly-HRP Goat Anti-Rabbit & Mouse Universal Secondary Antibody, RT, 1h.

Images:

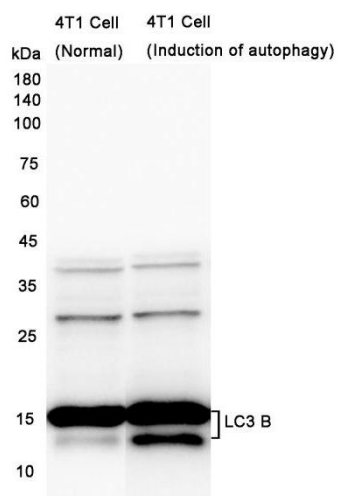


Sample: Mouse spleen, 4% PFA 12-24h

Source of Reagents:

发表[中文论文]请标注:LC3B(B12002R)由杭州浩克生物技术
有限公司提供;

发表[英文论文]请标注:LC3B(B12002R) were kindly provid
ed by Hangzhou Haoke Biotechnology Co., Ltd.



Dilution of 1:2000 incubated at room temperature for 1.5 hours.